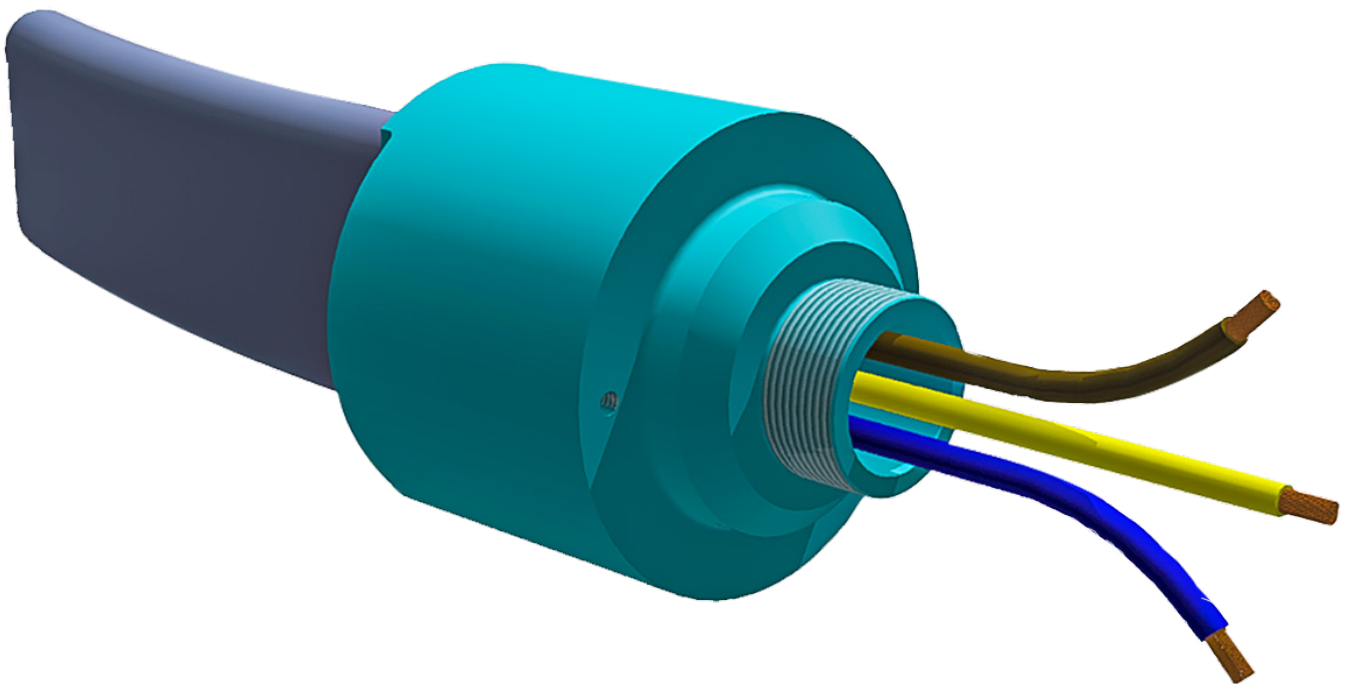




# italkrane

THE HIGHEST LEVEL OF EXPLOSION PROTECTION

## “EX” CABLE GLANDS FOR FLAT CABLES TOR SERIES





## DESCRIPTION

This innovative cable gland has been designed to solve, in a simple and effective way, the problem of creating a flat cable entry in any certified housing with Ex-d and Ex-e protection mode installed in classified areas, whether industrial, onshore or offshore.

The cable glands series “TOR” are designed, built and certified in accordance with the main international standards (see chapter “Certifications”) meeting the ATEX & IECEx requirements.

## TECHNICAL FEATURES

- Ambient temperature: operation – 50 + 115°C.
- Mechanical protection degree: IP 66.
- Usable in areas: Z1 / Z21 / Z2 / Z22.

## OPTIONS

Body made: cast iron, steel, brass or AISI 316

Threads available on request:

TOR 60 = M32x1,5 o 25x1,5 on request.

TOR 70 = M32x1,5.

TOR 80 = M32x1,5.

TOR 90 = M32x1,5 o 40x1,5 on request.

TOR 100 = M40x1,5 o 50x1,5 on request.

## CERTIFICATION

### Conformity to ATEX 2014/34/UE

- EN 60079-0 Explosive atmospheres. Equipment general requirements
- EN 60079-1 Explosive atmospheres. Equipment protection by flameproof enclosures “d”
- EN 60079-31 Explosive atmospheres. Equipment dust ignition protection by enclosure “t”
- EN 60079-7 Explosive atmospheres. Equipment protection by increased safety “e”

### Conformity to the IECEx Certification Scheme

- EN 60079-0 Explosive atmospheres. Equipment general requirements
- EN 60079-1 Explosive atmospheres. Equipment protection by flameproof enclosures “d”
- EN 60079-31 Explosive atmospheres. Equipment dust ignition protection by enclosure “t”
- EN 60079-7 Explosive atmospheres. Equipment protection by increased safety “e”

## CERTIFICATES

ATEX: INERIS 12ATEX0046X

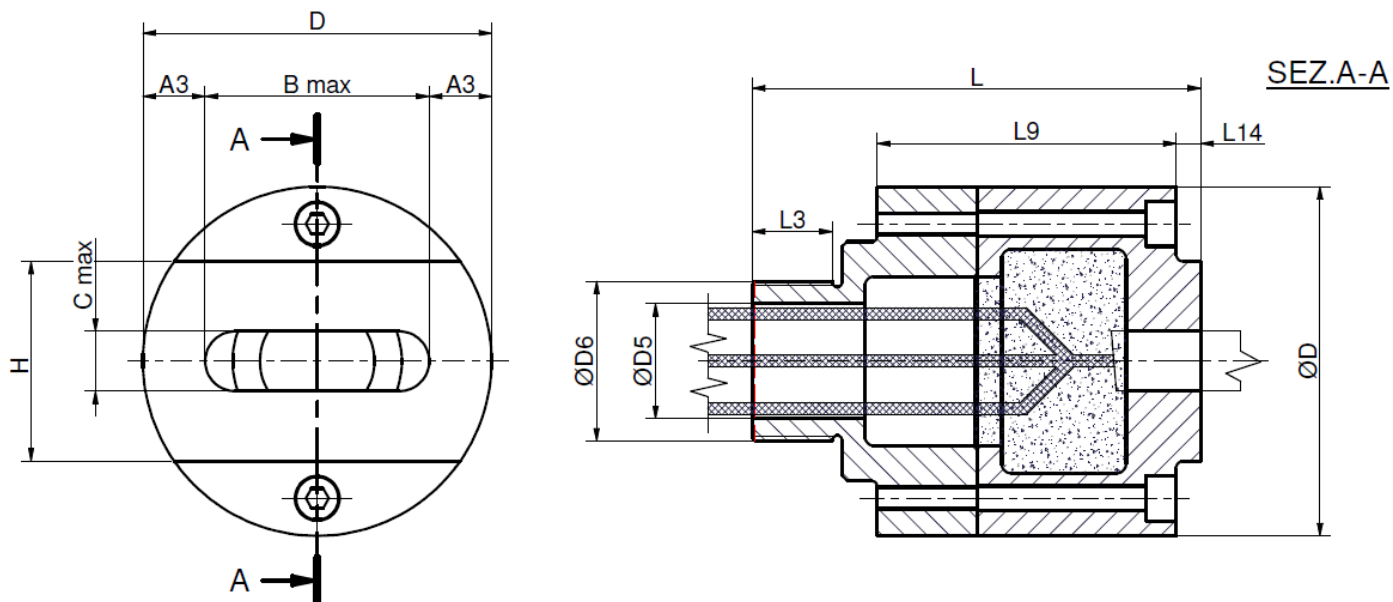
Types of protection: Ex d IIC Gb - Ex e IIC Gb - Ex tb IIIC Db IP66 - Ex d IIB Gb - Ex e IIB Gb.

IECEx

Types of protection: Ex d IIC Gb - Ex e IIC Gb - Ex tb IIIC Db IP66 - Ex d IIB Gb, Ex e IIB Gb.



## DIMENSIONS



### IIB

TYPE	A3 (mm)	B max. (mm)	C (mm)	D (mm)	D5 (mm)	D6 (mm)	H (mm)	L (mm)	L3 (mm)	L9 (mm)	L14 (mm)
TOR-60	12.5	35	10	60	23	M32x1.5*	32	80	13	55	5
TOR-70	12.5	45	12	70	23	M32x1.5	40	90	16	60	5
TOR-80	13.5	53	14	80	23	M32x1.5	40	100	18	65	5
TOR-90	13.5	63	16	90	23	M32x1.5**	50	110	18	75	5
TOR-100	13.5	73	20	100	31	M40x1.5***	60	120	18	75	10

On request: \*M25x1.5 / \*\* M40x1.5 / \*\*\* M50x1.5

### IIC

TYPE	A3 (mm)	B max. (mm)	C (mm)	D (mm)	D5 (mm)	D6 (mm)	H (mm)	L (mm)	L3 (mm)	L9 (mm)	L14 (mm)
TOR-60	12.5	35	10	60	23	M32x1.5*	32	83	13	55	5
TOR-70	12.5	45	12	70	23	M32x1.5	40	90	16	60	5
TOR-80	13.5	53	14	80	23	M32x1.5	40	100	18	65	5
TOR-90	13.5	63	16	90	23	M32x1.5**	50	118	18	75	5
TOR-100	13.5	73	20	100	31	M40x1.5***	50	120	18	75	10

On request: \*M25x1.5 / \*\* M40x1.5 / \*\*\* M50x1.5





**ITALKRANE lifting equipment**

**Bridge cranes**

**Electric wire rope hoists**

**Winches**

**Special cranes**

**Chain hoists**

**Crane kit**

**Components**

**Via Monza, 13 - 20041 - Bussero (Milano – Italy)**

**+39 02 92 97 21 - [italkrane@italkrane.it](mailto:italkrane@italkrane.it)**

**Sales: [chiara.giovanetti@italkrane.it](mailto:chiara.giovanetti@italkrane.it)**

**After sales: [banfi@italkrane.it](mailto:banfi@italkrane.it)**

**Spare parts: [bolzoni@italkrane.it](mailto:bolzoni@italkrane.it)**