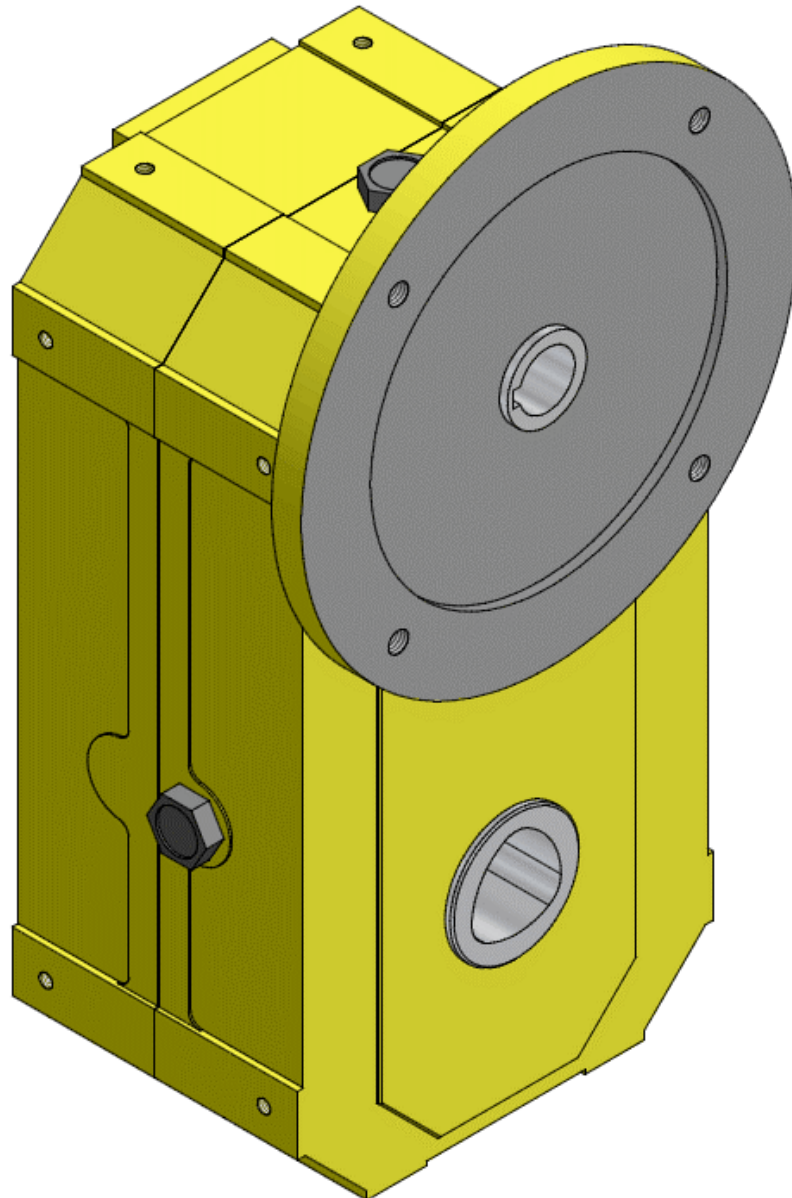




italkrane

THE HIGHEST LEVEL OF EXPLOSION PROTECTION

GEARBOXES FOR INDUSTRIAL LIFTING

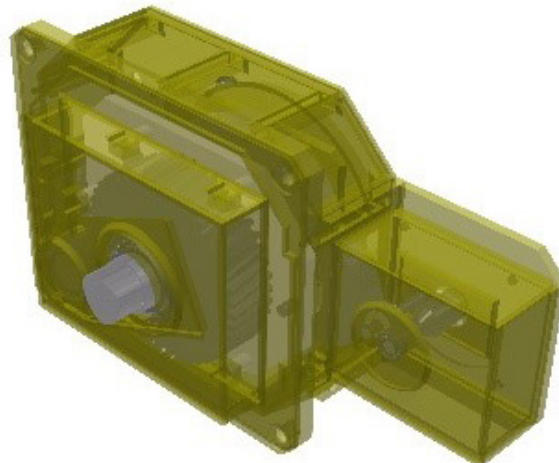
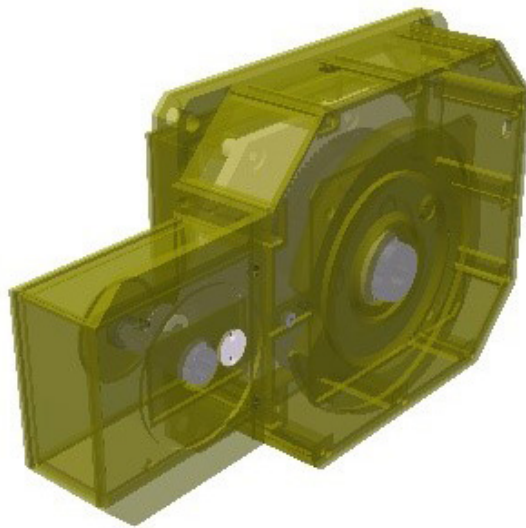


UP Series gearboxes for industrial lifting

Compact design, gears in oil bath, connected to the structure by high strength cutting bushings and bolts. The gears are cylindrical type, made of alloy steel, hardened, and tempered, with ground fast shaft. The slow shaft, which directly drives the drum, is shaped with a special polygonal shape, according to DIN standards, that avoids the harmful notches caused by keyed or splined joints.

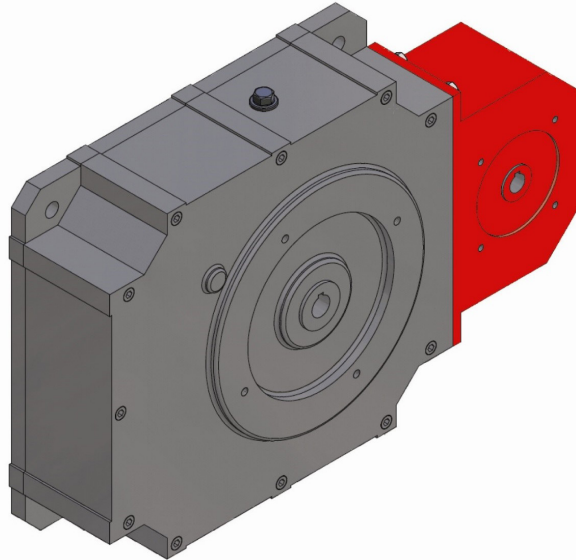
MICROMETRIC LOW LIFTING SPEED STAGE

For special assembly operations or for special lifting and load-handling requirements, the reducer can be supplied with a second lifting speed, whose value is normally 1/10th or 1/5th of the normal speed. In this case, the gearbox includes the addition of a second stage and incorporates a differential system that allows the application of a second self-braking motor of adequate power to obtain the slow speed. With this system, differently from the use of pole-changing motors, it is possible to change the speed with the load in motion and suspended. Moreover, if one motor failed, it would always be possible to work with the second one, avoiding production losses.



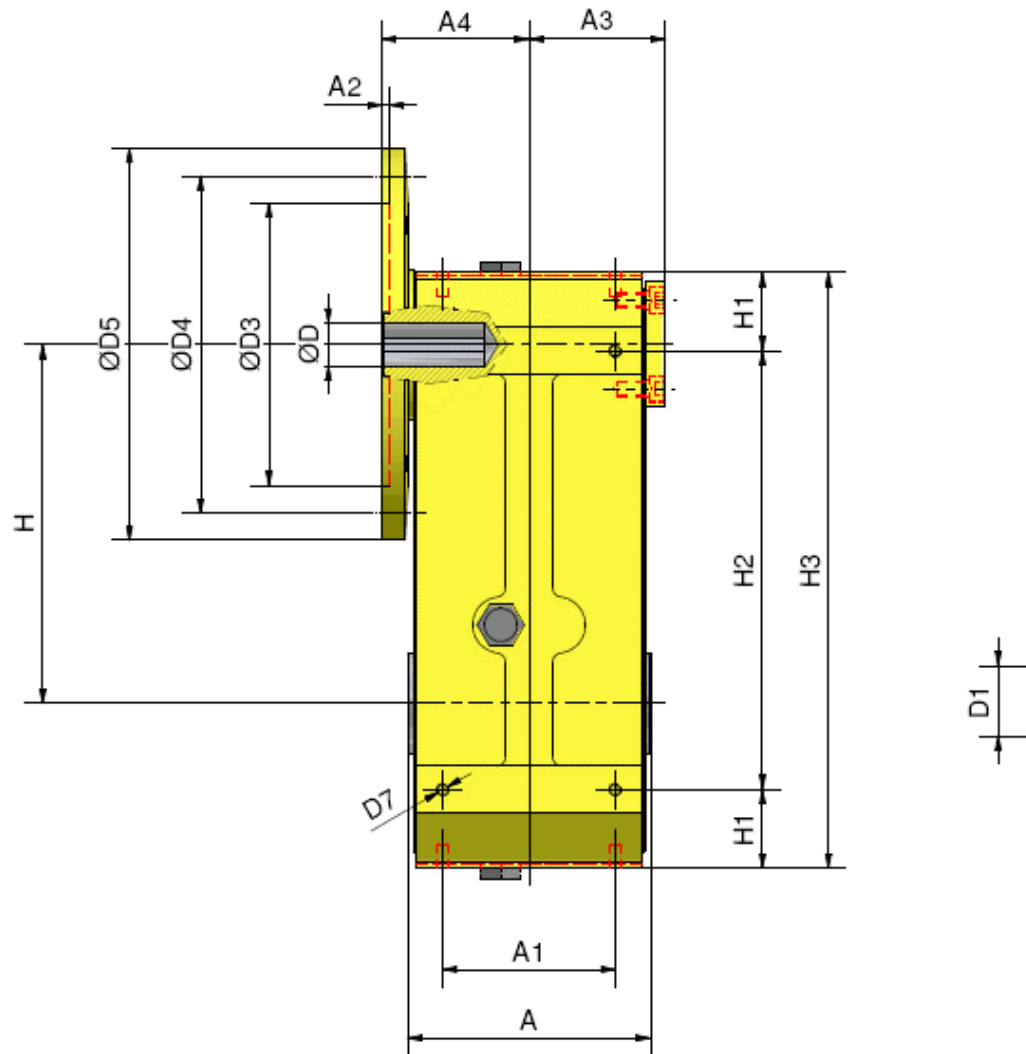
Shaft mounted gearboxes GO Series

Our “GO” series gearboxes are parallel axis, shaft mounted type. Manufactured using the latest technology, they are made with an extremely rigid housing, containing rotating spur gears in an oil bath, mounted on ball bearings, and equipped with a standard flange for motor connection. These long-pitch gearboxes are designed for hoisting applications that require to have the motor and the drum on the same side: the result is a simple and extremely versatile installation that meets every need.

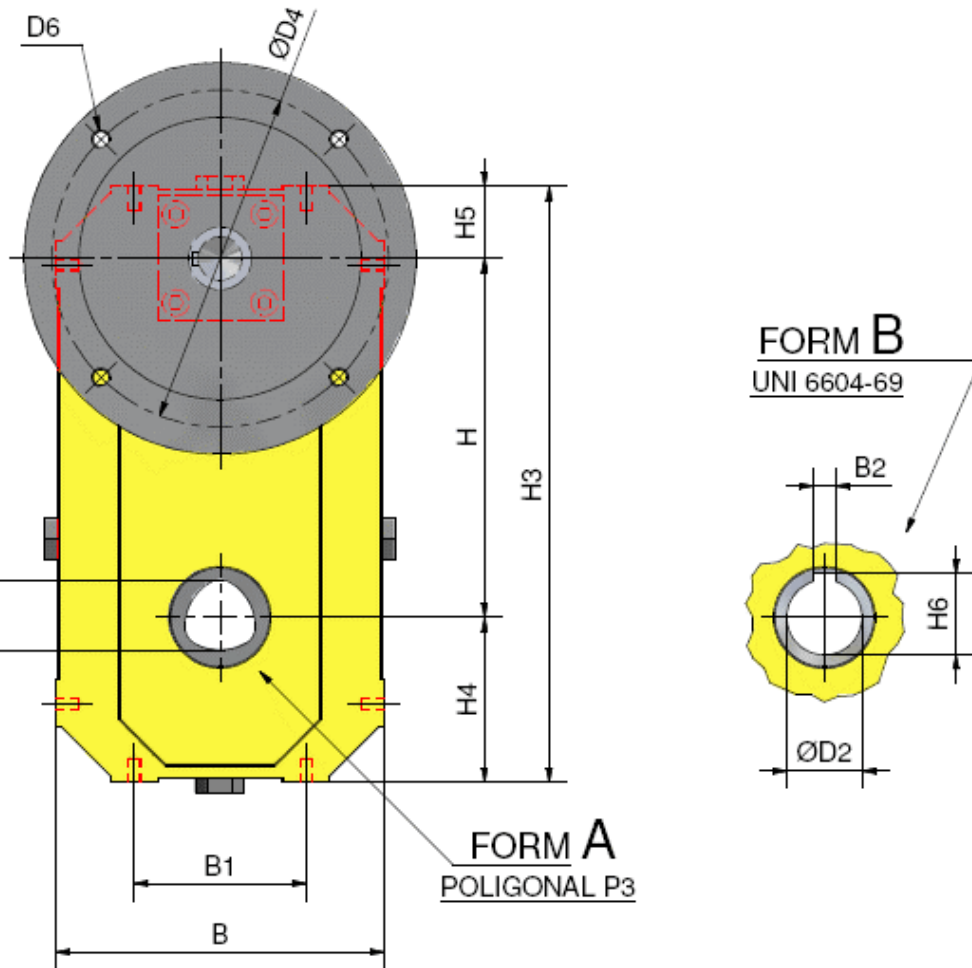


“UP” GEARBOX RATIOS			
TYPE	Single speed ratio	Double speed ratio	
		High speed	Low speed
132	53	52	513
	43	45	443
	36	39	387
180	109	97	963
	98	76	753
	74	58	577
	63		
250	170	159	1562
	131	138	1353
	104	101	990
	80	81	797
	67	67	653
		48	475
315	160	157	1692
	133	126	1358
	106	104	1119
	86	87	940
	65	64	694

MAIN DIMENSIONS



SIZE	A	A ₁	A ₂	A ₃	A ₄	B	B ₁	B ₂	ISO H7			D ₃
									D	D ₁	D ₂	
GO 63	100	60	3,5 4	57	58 59	120	70	8	11 14	18 22	25	95 110
GO 71	115	75	4 4	65	67 68	140	80	8	14 19	22 28	28	110 130
GO 80	130	90	4 4	74	75 75	170	85	10	19 24	28 36	38	130 130
GO 90	155	110	4 5	86	87 94	210	110	14	24 28	36 45	48	130 180
GO 100	175	120	5 5	98	103 103	230	125	16	28 28	45 56	55	180 180
GO 112	225	170	5 5	112,5	128 128	310	175	18	28 28	56 60	60	180 180



D ₄	D ₅	D ₆	D ₇	H	H ₁	H ₂	H ₃	H ₄	H ₅	H ₆	KG	
											OIL	WEIGHT
115 130	140 160	M8 M8	M6	118	25	160	210	60	32	28,3	0,3	8
130 165	160 200	M8 M10	M6	150	30	200	260	70	40	33,3	0,7	18
165 165	200 200	M10 M10	M8	187	42,5	235	320	85	48	41,5	1	29
165 215	200 250	M10 M12	M8	230	50	280	380	105	105	52,5	2	47
215 215	250 250	M12 M12	M10	273	52,5	335	440	115	115	59,3	2,7	62
215 215	250 250	M12 M12	M10	370	67,5	450	585	155	155	64,4	4,5	150

RATIOS, TRANSMISSIBLE TORQUE AND POWER

GO	Input speed	Input power					kW
		Ratio					
		115	100	85	68	56	
63	2800					0,4	0,5
	1400					0,2	0,2
	900					0,1	0,2
	700					0,1	0,1
71	2800				0,6	0,8	0,9
	1400				0,3	0,4	0,5
	900				0,2	0,2	0,3
	700				0,2	0,2	0,2
80	2800			1	1,2	1,5	1,8
	1400			0,5	0,6	0,7	0,9
	900			0,3	0,4	0,5	0,6
	700			0,2	0,3	0,4	0,5
90	2800		2	2,4	3	3	3,7
	1400		1	1,2	1,5	1,5	1,8
	900		0,6	0,8	1	1	1,2
	700		0,5	0,6	0,7	0,7	0,9
100	2800		3,3	3,9	4,9	5,9	7,3
	1400		1,6	1,9	2,4	2,9	3,7
	900		1,1	1,2	1,6	1,9	2,4
	700		0,8	1	1,2	1,5	1,8
112	2800	5,7	6,6	7,8			
	1400	2,9	3,3	3,9			
	900	1,8	2,1	2,5			
	700	1,4	1,6	1,9			
	2800	24	28	33	41	50	62
	1400	12	14	16	21	25	31
	900	8	9	11	13	16	20
	700	6	7	8	10	13	16
	rpm	Output speed					

	Input power					Output torque	Available ratio
	Ratio						
	35	28	21	18	13		
	0,6	0,8	1	1,2	1,6	8	53,4 / 43,4 / 33,8 / 27 / 21 / 17,8 / 13,6 / 11,5
	0,3	0,4	0,5	0,6	0,8		
	0,2	0,3	0,4	0,4	0,5		
	0,2	0,2	0,3	0,3	0,4		
	1,2	1,5	2	2,3	3,2	16	87,6 (YoYo) / 73,4 / 61 / 52 / 44,7 / 35,6 / 26,7 / 21 / 18,2 / 14
	0,6	0,8	1	1,2	1,6		
	0,4	0,5	0,6	0,8	1		
	0,3	0,4	0,5	0,6	0,8		
	2,4	3	4	4,6		31,5	79,8 / 71,8 / 66,3 / 56,4 / 45,3 / 34,8 / 28 / 21,5 / 18
	1,2	1,5	2	2,3			
	0,8	1	1,3	1,5			
	0,6	0,7	1	1,2			
	4,7					63	101,9 / 85,2 / 68 / 56 / 45 / 36,7 / 28,8 / 23,8
	2,4						
	1,5						
	1,2						
	9,4					125	113,9 / 85,5 / 79 / 68 / 56 / 42 / 33,8 / 27,6
	4,7						
	3						
	2,4						
						250	187,3 / 162,4 / 142,5 / 122 / 107 / 94,8 / 84 / 74,4
	80	100	133	156	215	da Nm	Black ratio are to be preferred
	40	50	67	78	108		
	26	32	43	50	69		
	20	25	33	39	54		
Output speed							



ITALKRANE lifting equipment

Bridge cranes

Electric wire rope hoists

Winches

Special machines

Chain hoists

Crane kit

Components

Via Monza, 13 - 20041 - Bussero (Milano – Italy)

+39 02 92 97 21 - italkrane@italkrane.it

Sales: chiara.giovanetti@italkrane.it

After sales: banfi@italkrane.it

Spare parts: bolzoni@italkrane.it